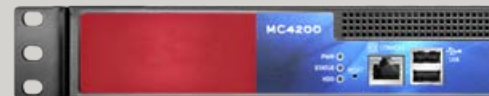




Fortinet Wireless Controllers
MC-Series



Fortinet Wireless Controllers

Fortinet MC1550, MC3200, MC4200 and MC6000

End-to-end control over the wireless LAN for your large enterprise

Fortinet infrastructure wireless controllers deliver a secure access solution for highly mobile organizations. Deployment flexibility allows you to deliver fast WiFi to support a broad variety of applications. Powered by Fortinet’s System Director operating system, infrastructure WiFi controllers optimize traffic across wireless access points and client devices to provide high performance and predictability while addressing enterprise demands for wireless connectivity.

These controllers for infrastructure WiFi manage authentication, encryption and virtual private network connections for the wireless network. Policy enforcement and wireless intrusion prevention software can be added.

Features

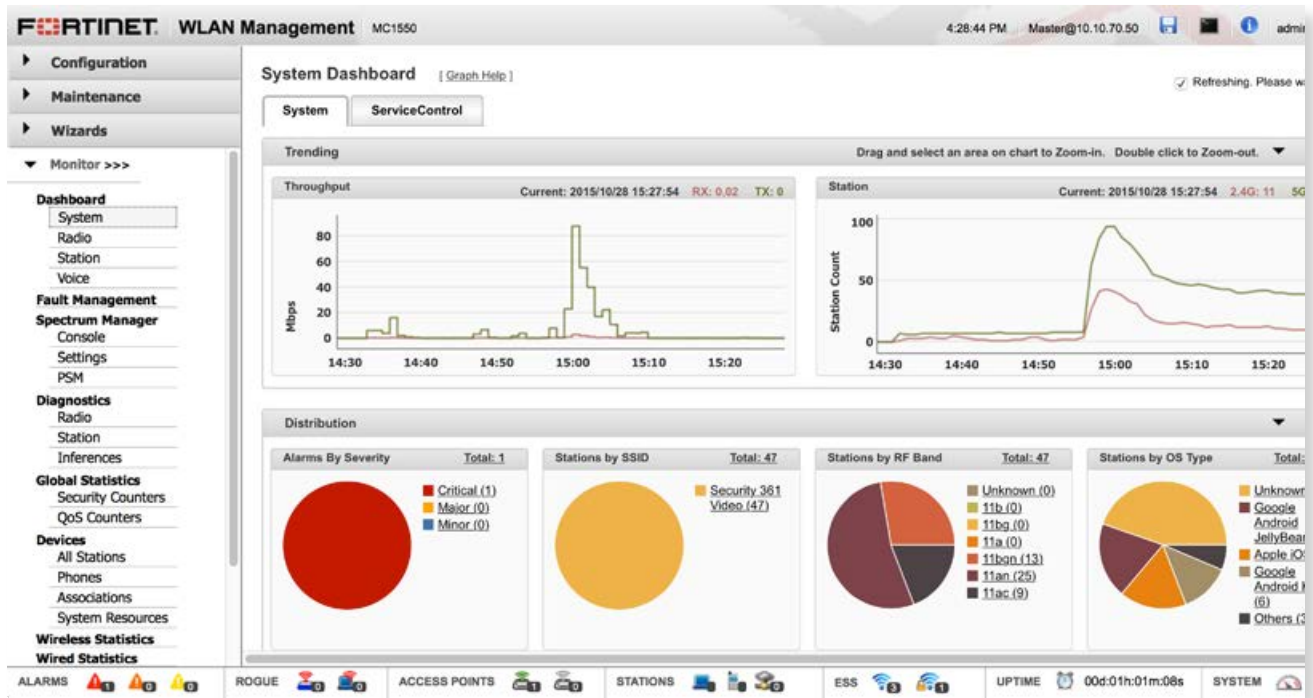
- Powered by System Director operating system to govern all traffic on the wireless LAN
- Airtime Fairness® allocates equal time across devices to ensure that all traffic operates at its maximum speed
- Seamless integration with existing infrastructure, with support for diverse applications
- Single channel architecture with ability to layer additional channels in the same physical space
- Multilayered security: encryption, 802.1X authentication, firewall, rogue detection/suppression, and wireless IPS/IDS

Benefits

- Controls and optimizes wireless traffic across access points and client devices
- Simultaneously supports multiple high-bandwidth, resource-intensive applications, including voice and video
- Delivers superior performance, scalability, and flexibility
- Eliminates co-channel interference and the need for channel planning while enabling easy capacity expansion
- Protects sensitive data and aids in compliance



FEATURES



Service Director 8.0 Dashboard

SPECIFICATIONS

APPLICATION SUPPORT AND OVER-THE-AIR QoS
SIP and H.323 support Dynamic out-of-the-box support for SIP and H.323 applications and codecs
QoS Configurable QoS rules for SIP, H.323, Asceni, Avaya, Microsoft, Polycom, Siemens, and ShoreTel User-configurable static and dynamic QoS rules per application (user-defined) and per user (stations, users, and port numbers) Call admissions control and call load balancing WMM support WMM rate adaptation, optimized based on real-time network conditions
SECURITY
Authentication Combination of captive portal, 802.1X, and open authentication Advanced security using WPA2 802.1X with EAP-Transport Layer Security (EAP-TLS), Tunneled TLS (EAP-TTLS), Protected EAP (PEAP), MS-CHAPv2, Smartcard/Certificate, Lightweight EAP (LEAP), EAP-FAST, and EAP-MD5, with mutual authentication and dynamic per-user, per-session unicast and broadcast keys Secure HTTPS with customizable captive portal utilizing RADIUS
Encryption Support Static and dynamic 40-bit and 128-bit WEP keys, TKIP with MIC, AES, SSL, TLS
Security Policy Radius-assisted, per-user and per-ESSID access control via MAC filtering Multiple ESSID/BSSID, each with flexibility of separate and shared security policy
Rogue Detection and Suppression All controllers have the intelligence to identify and classify rogue devices
Security Firewall Per-user firewall with fine-grained policy management: admission control, packet prioritization, QoS flows, packet drop policy, bandwidth scaling, filter ID, network protocol, and source port filtering System-configured or per-user, RADIUS-configured firewall policy

MOBILITY
Zero-Loss Handoffs Infrastructure-controlled, zero-loss handoff mechanism for standard WiFi clients
Virtual Cell Load Balancing Virtual Cell provides load balancing coordination for improved performance and WLAN resiliency upon AP failure
CENTRALIZED MANAGEMENT
Zero Configuration Automatically selects power and channel settings Access points automatically discover controllers and download configuration settings Zero-touch, plug-and-play deployments
System Management Centralized and remote management and software upgrades via System Director web-based GUI, SNMP, command-line interface (CLI) via serial port, SSH, Telnet, centrally managed via Network Manager Centralized security policy for WLAN, multiple ESSIDs, and VLANs with their own administrative/security policies
Intelligent RF Management Coordination of access points with load balancing for predictable performance Centralized auto-discovery, auto-channel configuration, and auto-power selection for APs Co-channel interference management
WIRED/WIRELESS SUPPORT
Wireless Compliance IEEE 802.11 a/b/g/n/ac, IEEE 802.11i support (AES, WEP, WPA, WPA2), IEEE 802.11e, WMM
Automatic Discovery & Configuration All Fortinet access points
Wired/Switching IEEE 802.1Q VLAN tagging, GRE Tunneling, and IEEE 802.1D Spanning Tree Protocol

SPECIFICATIONS

	MC1550	MC3200	MC4200	MC6000
General				
Application	Small enterprises, remote offices	Medium enterprises, branch offices	Large enterprises, regional offices	Very large enterprises, headquarters, large campuses
Hardware				
GE RJ45 Ports	2	4	4	—
1 GE / 10 GE SFP+ Slots	—	—	Optional 2-port module	6 per blade (Maximum 10 blades per chassis)
Capacity				
Maximum Access Points	50	200	500	5,000
Maximum Clients	1,000	2,000	5,000	50,000
Dimensions				
Height x Width x Length (inches)	1.73 x 10.70 x 7.68	16.97 x 1.74 x 16.49	16.97 x 1.74 x 16.49	12.1 x 18.5 x 29.0
Height x Width x Length (cm)	4.4 x 27.2 x 19.5	43.1 x 4.45 x 41.88	43.1 x 4.45 x 41.88	30.7 x 47.0 x 73.7
Weight	4.4 lbs (2.0 kg)	22.4 lbs (10.2 kg)	25 lbs 6 oz (11.47 kg)	80–240 lbs, depending on configuration (36.3–108.9 kg)
Form Factor	Desktop	1 RU	1 RU	7 RU
Environment				
Power Supply	One 12V, 3.75A (45 W Max) AC/DC adapter included	Single 270 W PSU	Dual Hot Swappable 275 W PSU	Dual 1620 W PSU (Supports two optional additional PSUs, field upgradeable)
Operating Temperature	32–104°F (0–40°C)	32–104°F (0–40°C)	32–104°F (0–40°C)	50–95°F (10–35°C)
Storage Temperature	-4–158°F (-20–70°C)	-40–185°F (-40–85°C)	-40–185°F (-40–85°C)	-40–158°F (-40–70°C)
Humidity	10–95% non-condensing	95% at 40°C (104°F)	95% at 40°C (104°F)	8–90% non-condensing
Compliance				
Safety	FCC Part 15B Class B, UL 60950-1, CSA C22.2 No. 60950-1-07, EN 60950-1, IEC 60950-1, ICES-003 Class B, EN55022 Class B, EN55024, VCCI Class B	FCC Part 15/ICES-003 Class A, VCCI Class A, EN 55022 Class A, EN 55024, EN60601-1, EN60601-1-2, KCC, UL 60950-1, IEC 60950-1	FCC Part 15/ICES-003 Class A, VCCI Class A, EN 55022 Class A, EN 55024, EN60601-1, EN60601-1-2, KCC, UL 60950-1, IEC 60950-1	FCC Part 15B Class A, UL 60950-1, CSA C22.2 No. 60950-1-07, EN 60950-1, IEC 60950-1, ICES-003 Class A, EN55022 Class A, EN55024, VCCI Class A
Certifications				
	RoHS, REACH, WEEE	RoHS, CB Report, WiFi Certified a/b/g/n	RoHS, CB Report, WiFi Certified a/b/g/n	RoHS, REACH, WEEE
Warranty				
Standard Warranty	1 year	1 year	1 year	1 year

Note: Transceivers to be purchased separately. 850 nm multimode: Intel FTLX8571D3BCV-IT or 1310 nm single mode: Intel FTLX1471D3BCV-IT



MC1550



MC3200



MC4200



MC6000

ORDER INFORMATION

Product	SKU	Description
MC1550	MC1550-0-xx	Wireless controller with zero access point licenses
	MCx000-SD-XAP	License for "X" number of access points
MC3200	MC3200-xx	Wireless controller with zero access point licenses
	MCx00-SD-XAP	License for "X" number of access points
MC4200	MC4200-xx	Wireless controller with zero access point licenses
	MCx000-SD-XAP	License for "X" number of access points
	MC4200-SD-10G	License to run 10GE hardware option on an MC4200
MC6000	MC6K-CHS-US	MC6000 7U chassis for U.S. only; two power supply units providing redundancy for up to three blades; one 1 GE switch; and one chassis management module. Ships with U.S. power cord.
	MC6K-CHS-XX	MC6000 7U chassis (non-U.S.); two power supply units providing redundancy for up to three blades; one 1 GE switch; and one chassis management module. Add -xx country code suffix for power cord: CA (Canada), JP (Japan), UK (United Kingdom), EU (Europe).
	MC6K-BLC-6P-US	MC6000 6-port controller blade for U.S. only, with support for 10 Gigabit Ethernet and/or Gigabit Ethernet interfaces. Supports SFP+ transceivers (not included); includes System Director software (requires System director 5.3 or higher).
	MC6K-BLC-6P-XX	MC6000 6-port controller blade (non-U.S.) with support for 10 Gigabit Ethernet and/or Gigabit Ethernet interfaces. Supports SFP+ transceivers (not included); includes System Director software (requires System Director 5.3 or higher).
	MC6K-PS-X2-US	Two additional power supply units for the MC6000 chassis (U.S. only). Ships with two U.S. power cords.
	MC6K-PS-X2-XX:	Two additional power supply units for the MC6000 chassis (non-U.S.). Ships with two power cords. Add -xx country code suffix for power cord: CA (Canada), JP (Japan), UK (United Kingdom), EU (Europe).

Please note the range of Fortinet infrastructure access points are supported by a combination of specific controller firmware and hardware and are not designed to function with third-party controllers. Specific supported access point and controller combinations will change from time to time and such changes are detailed in the respective firmware release notes. The Fortinet range of controllers, whether they are infrastructure or integrated into FortiOS, only support Fortinet provided access points. Note that not all access points are supported by all controller types.



GLOBAL HEADQUARTERS
Fortinet Inc.
899 Kifer Road
Sunnyvale, CA 94086
United States
Tel: +1.408.235.7700
www.fortinet.com/sales

EMEA SALES OFFICE
905 rue Albert Einstein
Valbonne 06560
Alpes-Maritimes, France
Tel: +33.4.8987.0500

APAC SALES OFFICE
300 Beach Road 20-01
The Concourse
Singapore 199555
Tel: +65.6395.2788

LATIN AMERICA SALES OFFICE
Sawgrass Lakes Center
13450 W. Sunrise Blvd., Suite 430
Sunrise, FL 33323
United States
Tel: +1.954.368.9990