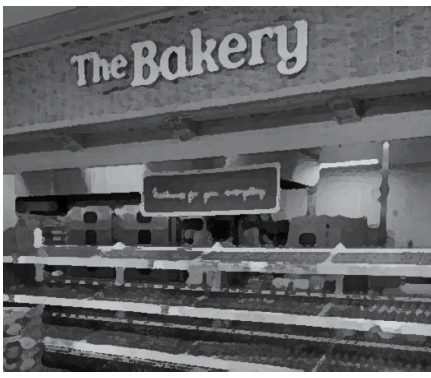


Case Study: Retail

Shop Floor Worker using Spectralink Device for Voice Communication and Stock Checks

Bob the Baker...



...has a Spectralink phone.



...and so does Warehouse Wayne.



...and others too.



...later, during the night



Bob the Baker has run out of flour. He urgently needs to organise a delivery. He uses his Spectralink Wi-Fi phone, because he knows he can depend on it.

Bob uses the **ruggedized** device to find who is available to help using Microsoft **Lync directory and presence**, and can also discuss while he walks to the warehouse at the other end of the store – with the call **seamlessly** handled over the Wi-Fi Network.

Wayne in the warehouse also has a Spectralink phone, and uses the **barcode scanner** to scan the code on a pallet, to check stock. The scan searches the system, with **context sensitive keys** to make navigation easier, and it **won't break** if inadvertently dropped.

Spectralink phones can be a **shared resource**, utilised as and when needed, across shifts. The batteries and hardware are built to last, with over **10 hour talk time** from one charge, and spare batteries can be charged at the same time.

Now the bread is baking for tomorrow, Steve the Security Guard uses one of the Wi-Fi phones while on his rounds at night, safe in the knowledge that the **panic button** and built in **motion detector** are linked to the security systems and central control room, and push-to-talk enables **walkie-talkie** functionality.